

# Portsmouth: Changing City

Portsmouth Society 28 February 2024 7pm

Royal Maritime Club Queen Street Portsea

Celia Clark PhD



David Brice BA FRPS









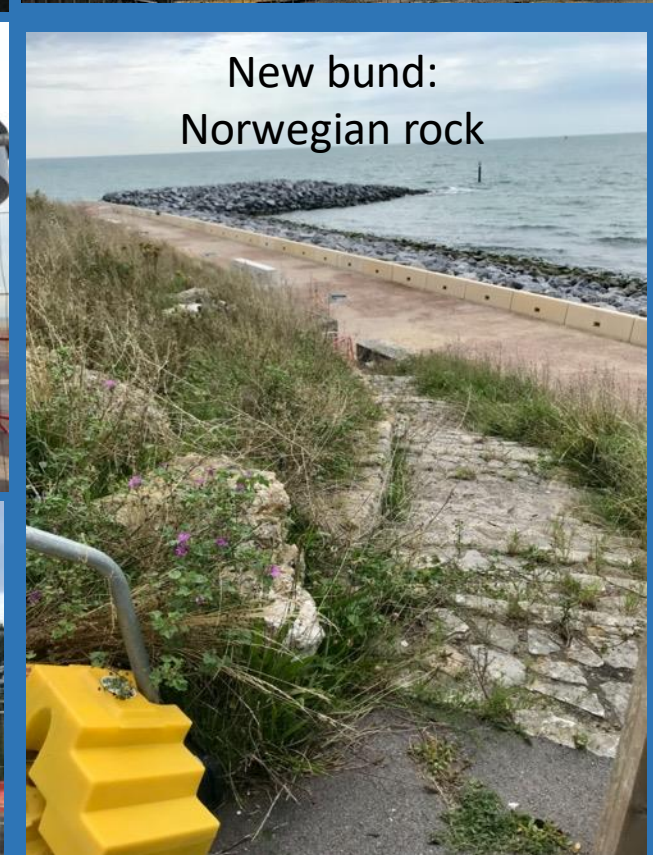
## New sea defences Southsea

Loss of green edge to  
Rock Gardens



Loss of vital seafront shelter

New bund:  
Norwegian rock



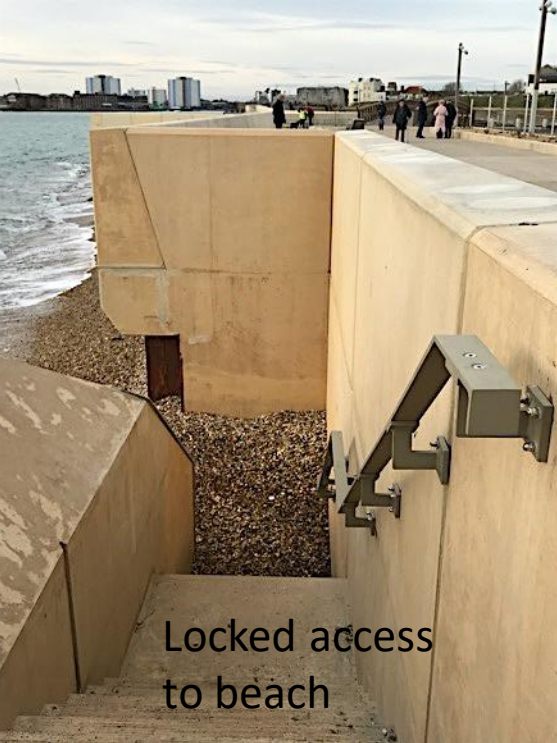
Rediscovery of De  
Gomme's bastion



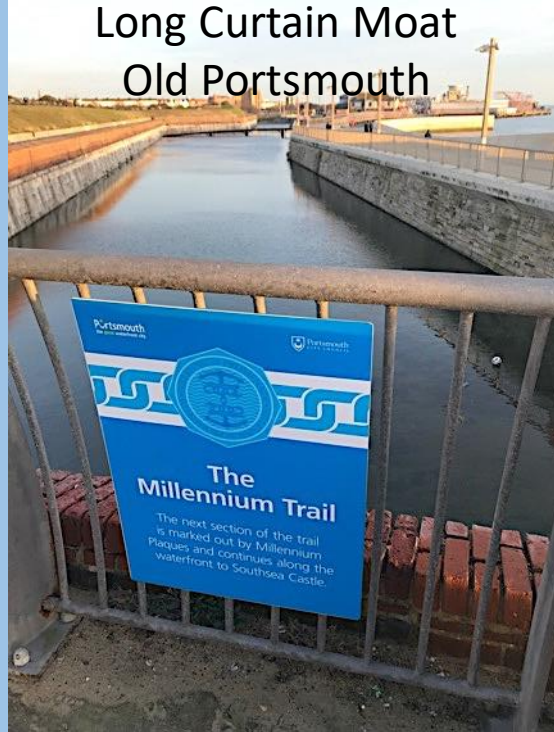
Historic shelters and lamp  
standards into storage







Locked access to beach



Long Curtain Moat  
Old Portsmouth



Spur Redoubt  
Marker sculpture

Spur Redoubt



Seating



Loss of historic paving



Miniscule plantig



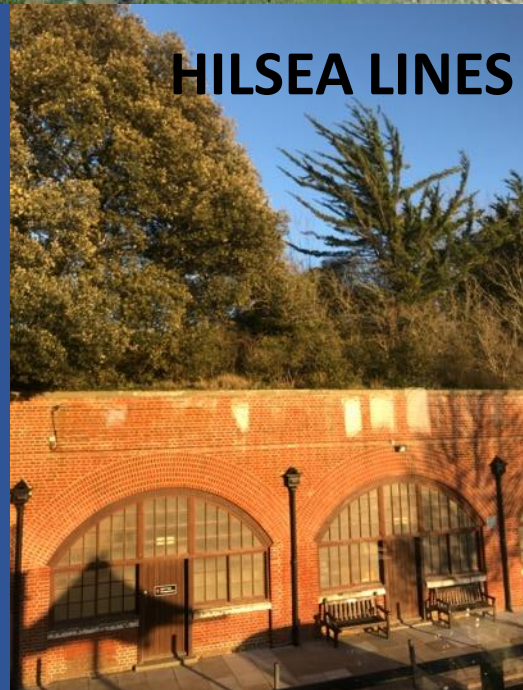
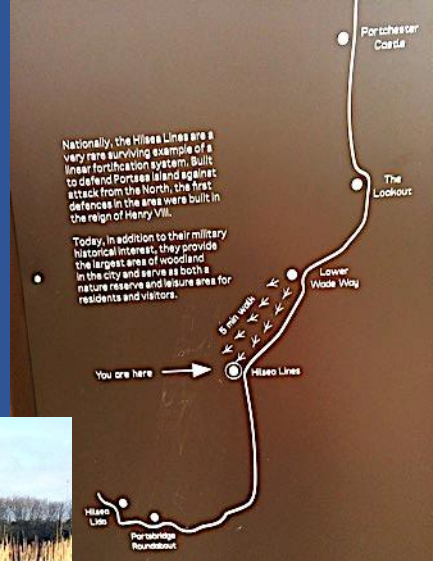
Minimal Interpretation panels



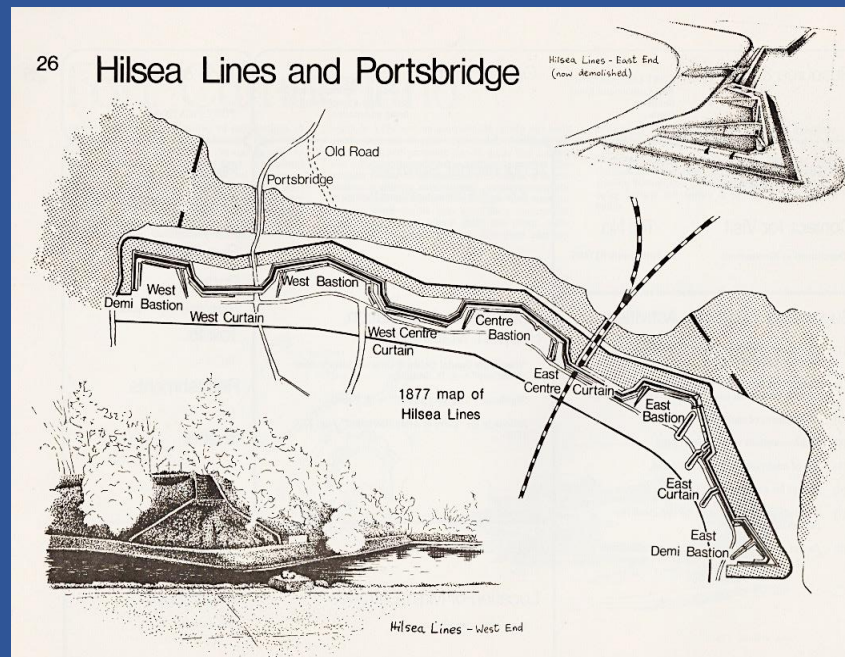




TIPNER LINEAR PARK



HILSEA LINES







**What is the Naval Base's  
response to rising sea levels?**







## Portsmouth Ferry Port The Greenest in the UK

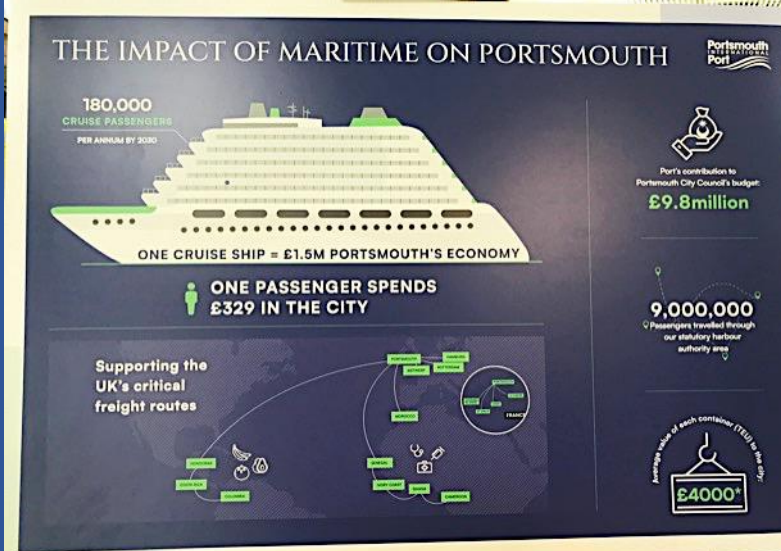
**PESO**  
Smart use of port renewable generation

PESO takes up the challenge of the 'Prospering from the Energy Revolution' (PER) initiative and demonstrates a smart energy system linking port-based electricity generation, consumption and local grid connectivity.

- Enhancing integration between local and national electricity networks, both electricity system operators (ESO) and distribution system operators (DSO).
- Enhancing integration between local and national electricity markets (wholesale market, balancing mechanism and ancillary services).

**Shore Power Provision**

- Berth 1 – 1MW
- Berth 2 – 10MW
- Berth 3 – 6.5MW
- Berth 4 – 6.5MW
- Berth 5 – 4MW
- North Quay – 1MW
- 30MW needed by 2030



### Biggest Winners for Carbon Reductions

## SHORE POWER

**LED Lighting – Over 60% carbon Saving**

**Shore Power – 90% carbon saving and significant Air Quality improvements.**

The biggest Winners for quickly decreasing not just the carbon we are pumping out but also improving Air Quality is the provision of shore power to all berths and the obligatory use of shore power where a ship is able to take it and ultimately the rejection of ships that cannot.



### PORT AIR QUALITY STRATEGY CARBON AUDITS 2018 & 2019

And right here below is the Challenge – 844 more ship visits in 2019 than in 2018 produced 10% more Carbon.

How do you decrease your Carbon production with the same 'Business as Usual' Business Plan?

By decarbonising everything.

	kgCO2e	kgCO2e	kgCO2e	kgCO2e
Totals 2018	90,000,000	40,000,000	20,000,000	60,000,000
Totals 2019	90,000,000	40,000,000	20,000,000	60,000,000



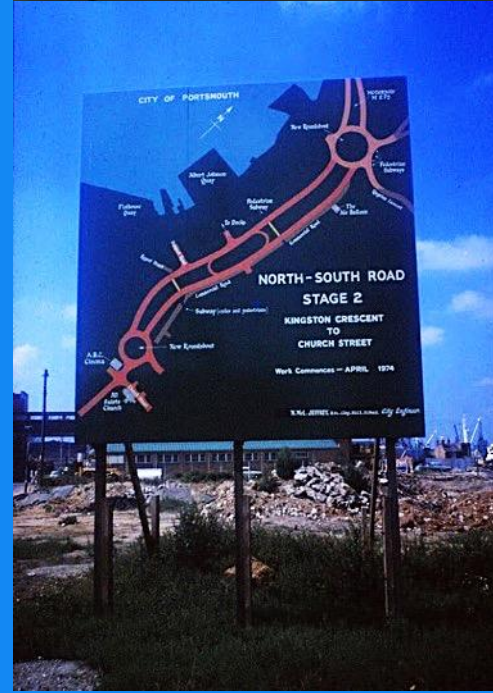
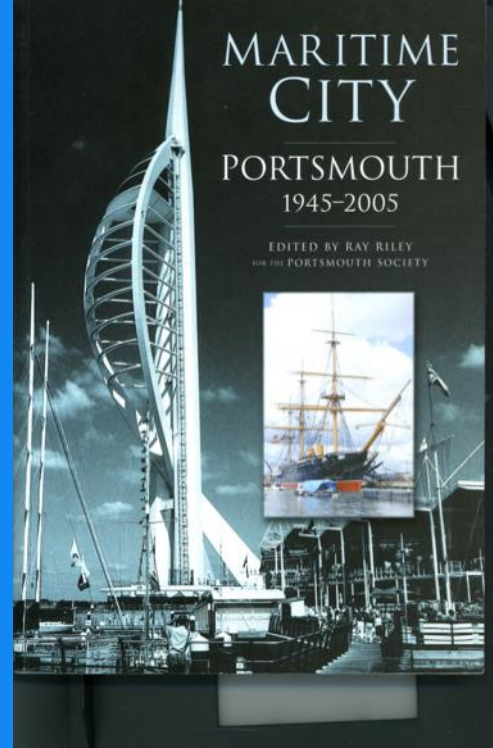


PORTSMOUTH SAY  
**THANK YOU**  
TO OUR BRIT VOLUNTEERS



# Portsmouth Society 1973-2024

- Celebrates local identity
- Constructive: puts forward better ideas
- Planning – public participation
- Transport – roads, traffic management, cycleways
- \* Green spaces, trees, landscaping
- \* Saving old buildings from demolition - and finding them new sustainable future –  
working with Hampshire Buildings Preservation Trust,  
Historic England, SAVE Britain's Heritage,  
Twentieth Century Society







**New Theatre Royal  
Saved by Cllr. Roger James**

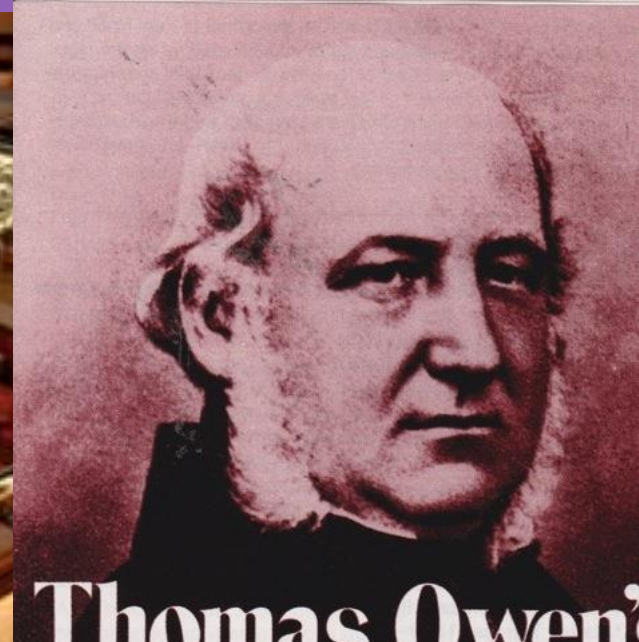


## Early successes - 1970s

**St. Agatha's Church Market Way  
Portsmouth Society's 1<sup>st</sup> Public Enquiry**



**Architect A H Ball; Heyward Sumner Sgraffito; loss of mosaic  
Collection of church furnishings and fittings**



**Thomas Owen's  
Southsea  
Four Guided Walks**



**European Architectural  
Heritage Year 1975**

Portland Terrace





# Portsmouth Society Successes

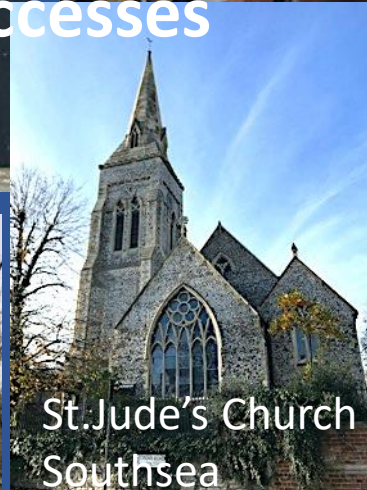
Rivers Street Hall Somerstown  
Winner: SAVE Britain's Heritage Award 1977



Portsmouth & Southsea  
Station



St. Mary's Workhouse  
+ HCC, HBPT Saved at Public Inquiry



St. Jude's Church  
Southsea



No. 4 Boathouse  
+ SAVE Britain's  
Heritage



Astoria/Palce cinemaa



Rock  
Gardens

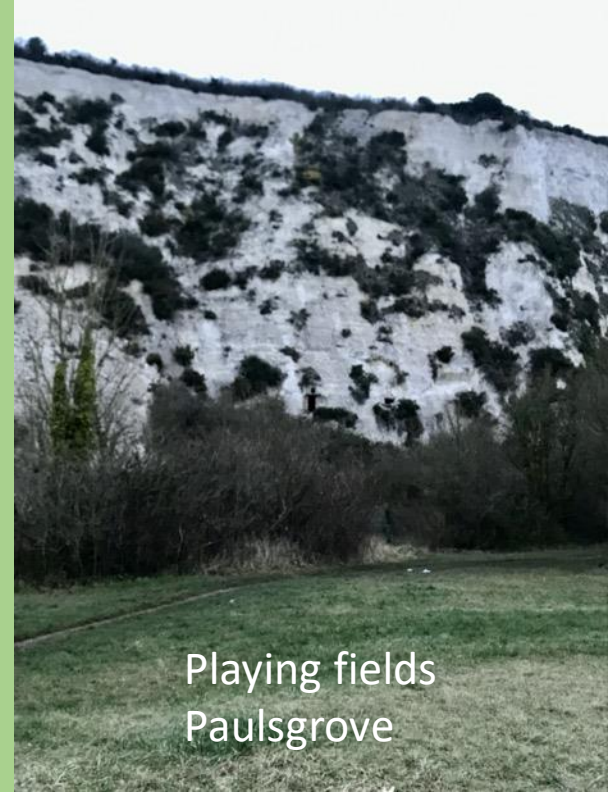


Precious Green Space



Hilsea Lines

Playing fields  
Paulsgrove



Highland Cemetery



Rose Garden



Southsea Common

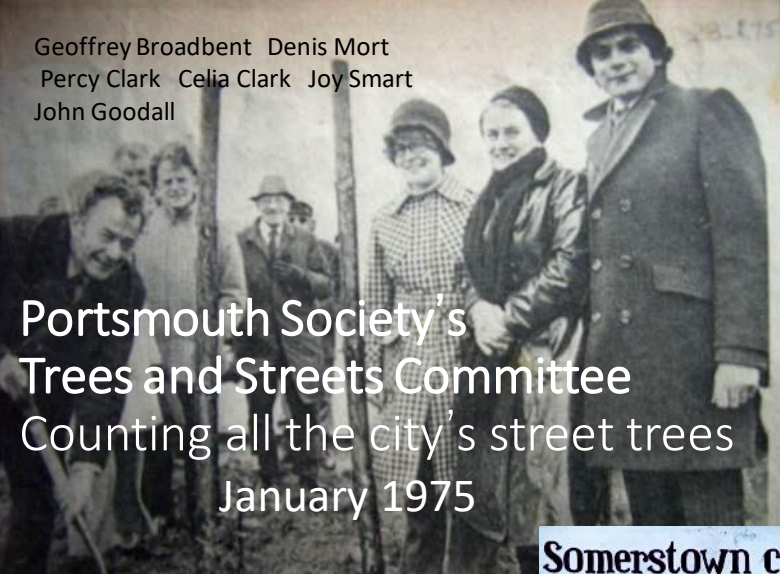


Milton Common





Geoffrey Broadbent Denis Mort  
Percy Clark Celia Clark Joy Smart  
John Goodall



Portsmouth Society's  
Trees and Streets Committee  
Counting all the city's street trees  
January 1975

Somerstown  
Adventure  
Playground  
Landscaping  
Award



Paulsgrove  
Landscaping  
Award



Greening School  
Grounds



Somerstown  
Community Wildlife Garden



White mulberry Milton Park 2013  
Pauline Powell  
Tree Wardens Co-ordinator

Planting new trees





# Portsmouth Society Design Awards Criteria: “Commodity, Firmness & Delight” Vitruvius c.27BC +Sustainability





# Newbuild



Stepped up block heights westward



## Ivy Street Somerstown Award



Energy generation

**Client:**

Portsmouth City Council

**Architects:** Re-Format;

Ken Scadden Associates

**Structural Engineers**

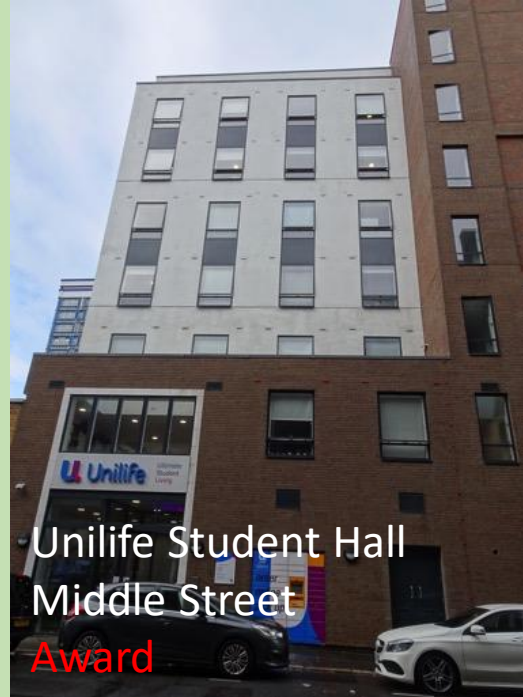
ARCH Consultants

**Builder** PMC Construction  
& Development





Crown Place  
City Centre



Unilife Student Hall  
Middle Street  
**Award**



The Parade Pre-School Nursery  
Doyle Avenue North End



BAR Camber  
**Award**

Buildings we've looked at in previous years



St Edmund's School  
**Commendation**



The Coach House  
Old Portsmouth  
**Award**



Castle View Academy  
Paulsgrove



Travelodge  
Stanhope Street



## New Buildings Previous years

Premier Inn  
Queen Street



The Hub Somerstown  
Award



Craneswater School  
New classroom



Portsmouth Cricket Club St. Helens Southsea



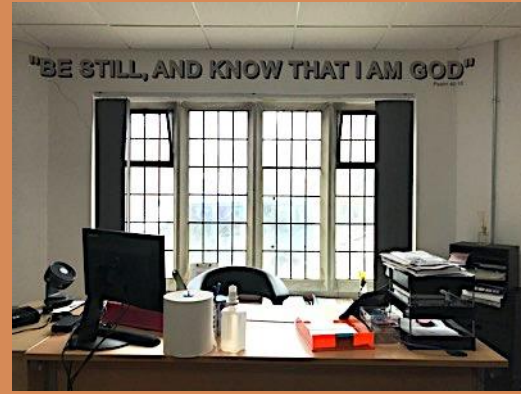


Architect: Studio BAD Architects  
Builder: Peter Grant Construction  
Manager  
Clare Carabutt  
Ross Fairbrother

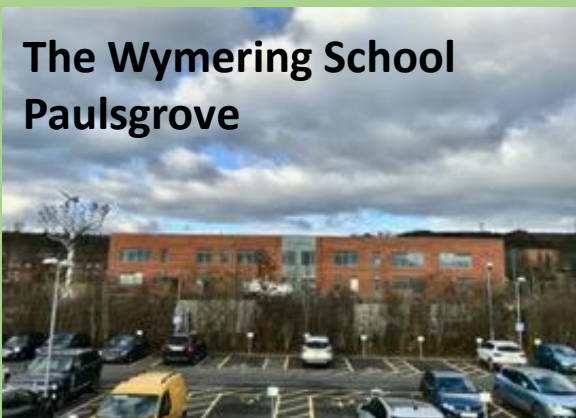
  
**ST MARGARET'S  
COMMUNITY CHURCH**  
BUILDING COMMUNITY WITH  
JESUS AT THE CENTRE



Reuse  
St. Margaret's  
Community  
Church  
Eastney







**Next Design Awards  
2024?**

**New Buildings: Education**





Conversion to flats: Brewery House Hambrook Street Southsea



Admiral Jellicoe House  
Lockway Road



# Housing

## New build & conversion



Henrietta Place  
Somerstown



Somerstown



Alexandra House  
Northern Parade







Rehabilitation Centre  
Queen Alexandra Hospital



## Health

New A & E





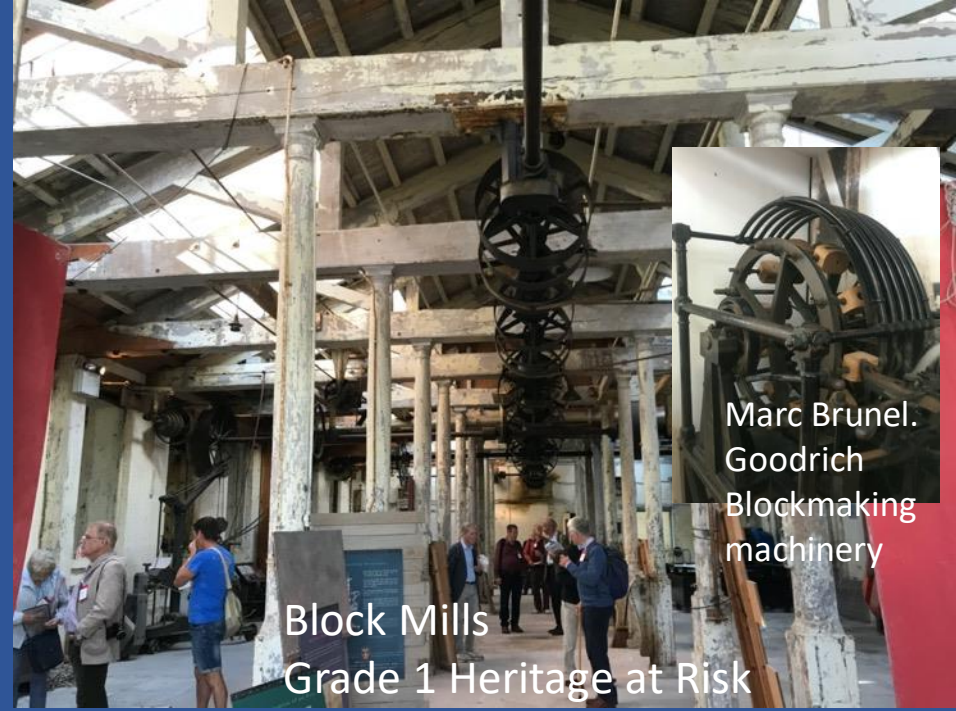


# Re - Used Buildings

## Kingston Prison

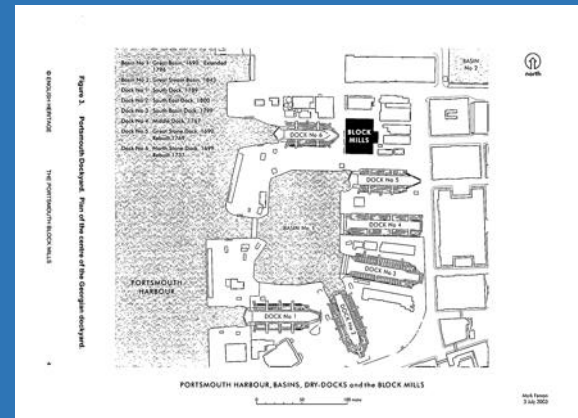
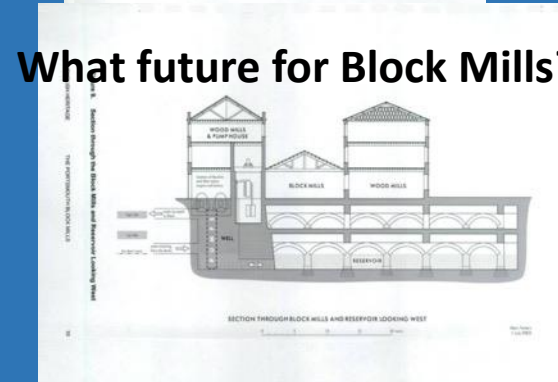
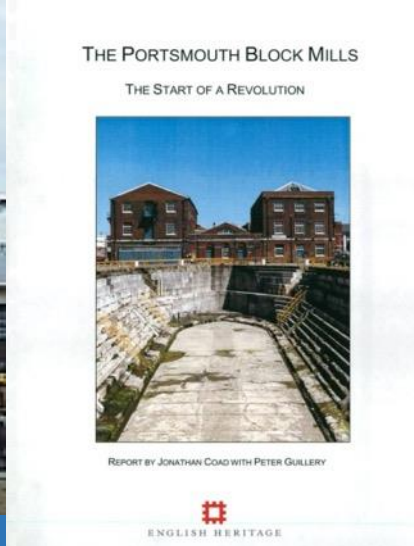






## Maritime and Industrial Heritage

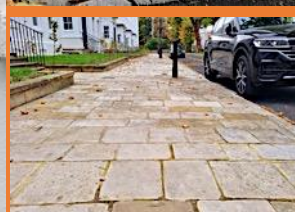




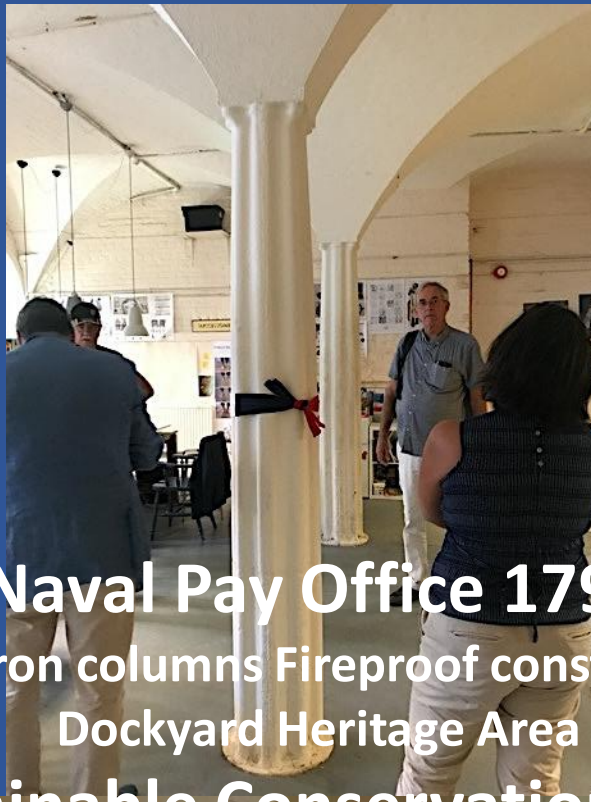




**BEST RESTORATION Award**  
1 The Parade  
HM Naval Base







**Naval Pay Office 1798**  
Cast iron columns Fireproof construction  
Dockyard Heritage Area  
Sustainable Conservation Trust





## Royal Naval Academy

(Buildings No.1/14, 1/16-19) College Road

Grade II\* 1732

AT RISK

Empty and decaying  
since c.2006....

because of proximity to



## Admiralty House

(Building No. 1.20)

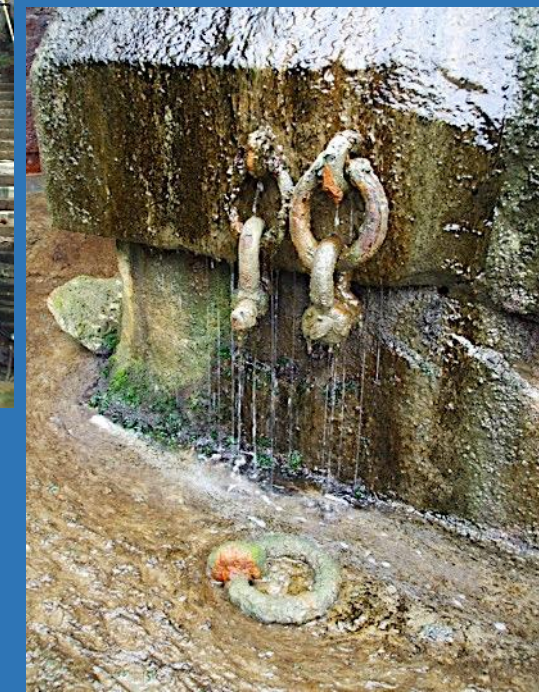
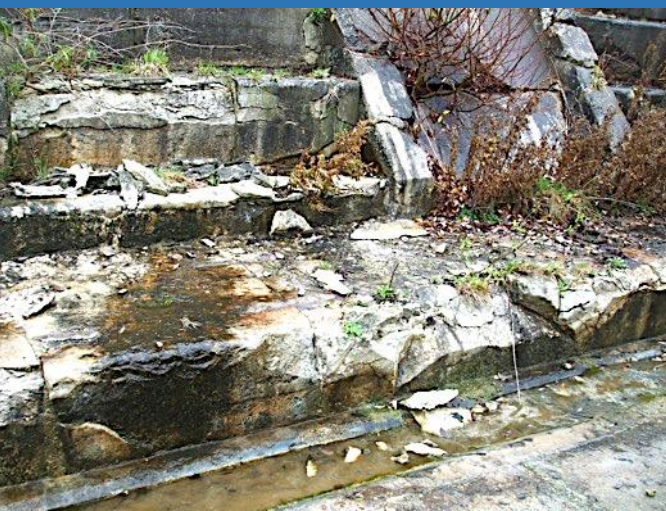
Grade 11\*







# No. 6 Dock Portsmouth Naval Base Building at Risk







**Ropery, No. 15 Store**  
(Building No. 1/62)

**Anchor Lane**

Grade II\* Listed  
Empty, dry rot



**Fire Station**  
**1843**

Building No.1.77  
Corrugated  
and cast iron

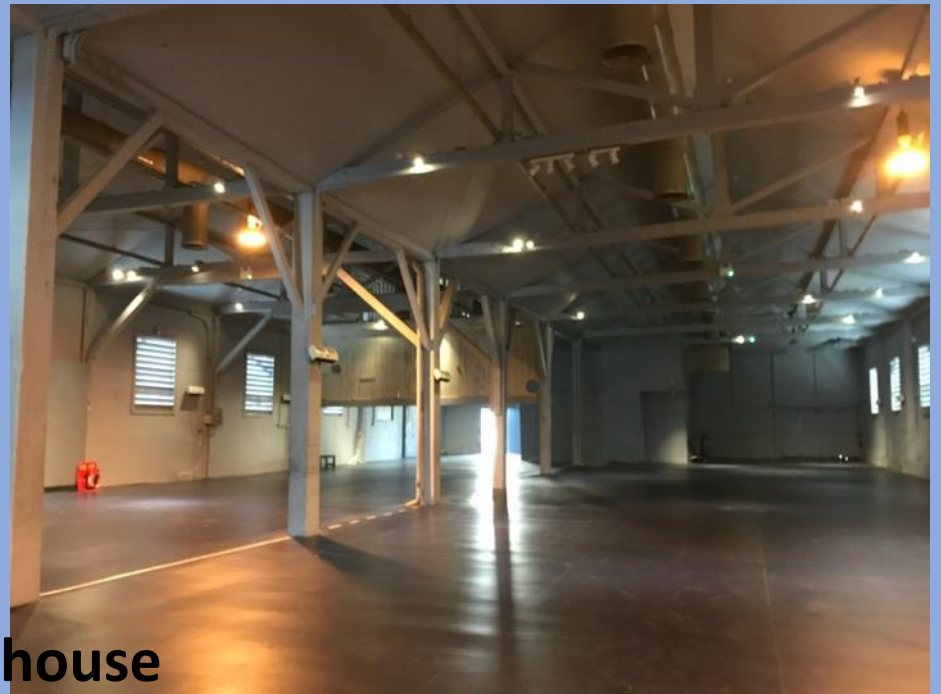






Dockyard  
Naval  
Architecture  
School  
HM Naval Base

Empty



No.5 Boathouse

Heritage Area  
Empty







## No. 6 Boathouse

Action Stations, Cinema > Royal Marines Museum?



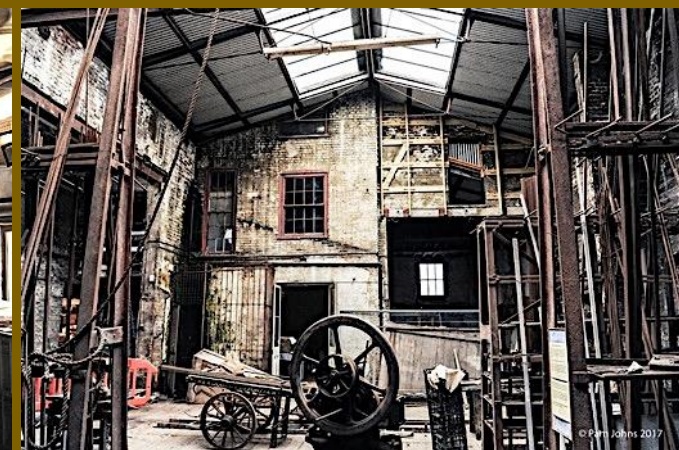




Treadgolds  
Bishop Street  
Portsea




Shop



Strong Island



# Eastney Pumping Station



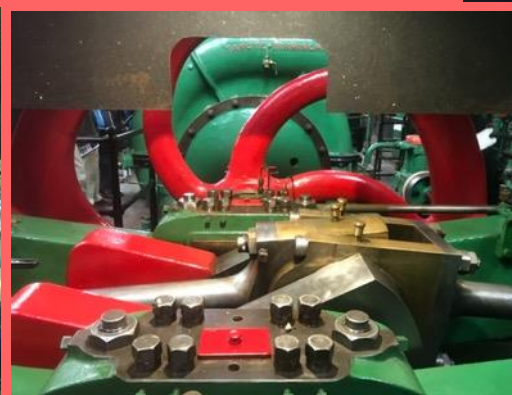
**Portsmouth Engine Room Tour**

The volunteers at Eastney Gas Engine House have invited HBPT (& friends) for a tour. The engine house is a time capsule displaying Victorian and Edwardian engineering at its finest. The engine house has unique and very large Crossley Town gas-powered sewage pumps along with many other stationary engines which can still be seen in action. Seen in the context of the social pressures the area was experiencing at the time, you can get an insight into Portsmouth at a time of rapid growth and social change.

We all hope to see you there! Please email Sarah Roberts if you would like to attend, so we can confirm final numbers. Email: [sroberts.hbpt@gmail.com](mailto:sroberts.hbpt@gmail.com)

**Date & Time**  
17th January 2023  
09:00 - 12:30

**Location**  
201-203 Henderson Rd, Southsea, Portsmouth, PO4 9JF







**Brunel's Bridge.....**

## **Isambard Kingdom Brunel's first surviving bridge**

Designed to span railway & canal Paddington

Stored in Fort Cumberland for 20 years

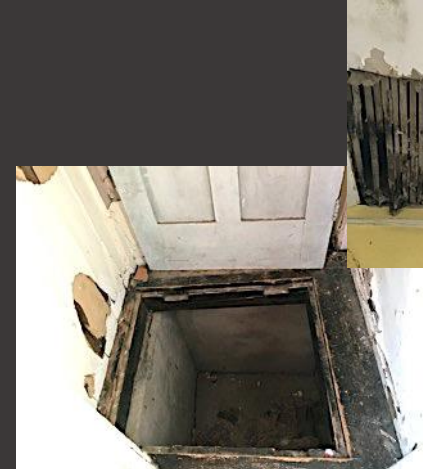
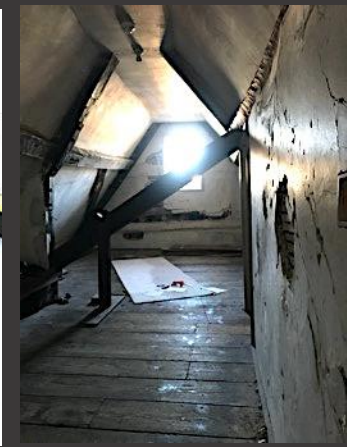
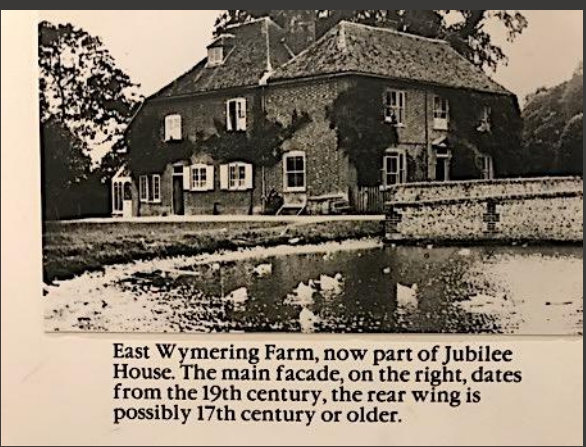
Reassembly?







# Wymering Manor Cosham





# Beneficial School Kent Street Portsea

Charity school 1784 and 1836 Grade II\*

Dance-drama school/theatre

Groundlings Theatre Trust











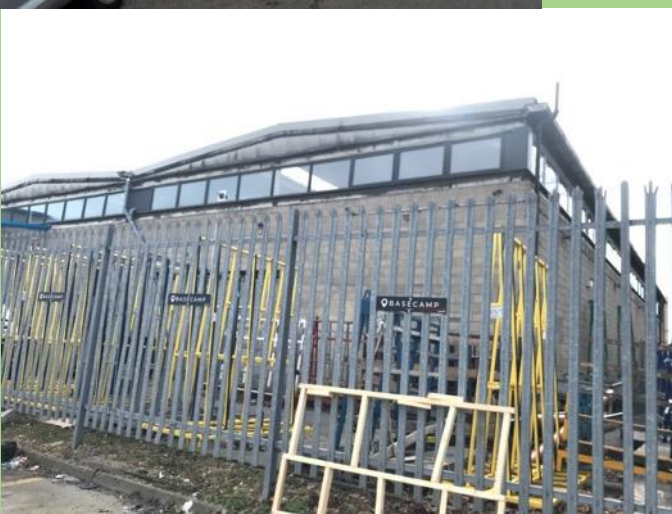
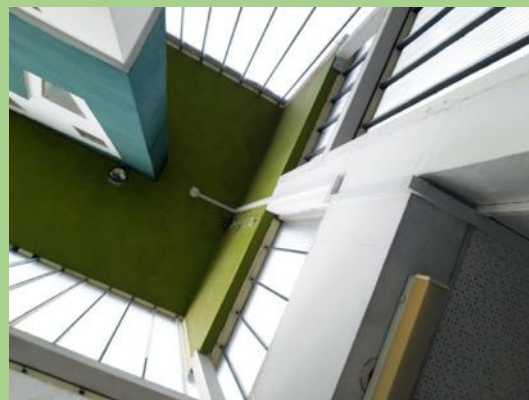
**NatWest Bank  
Palmerston Road  
Southsea**



**Historic England  
refused to List it**







Solaglass/EE Glass factory  
Limberline Spur Hilsea

List/Demolish?









## Neglected/derelict





Original Engine house



Lock gates disappeared



## Milton Locks

Conservation Area

Interpretation board

Canal side hedge

Decay



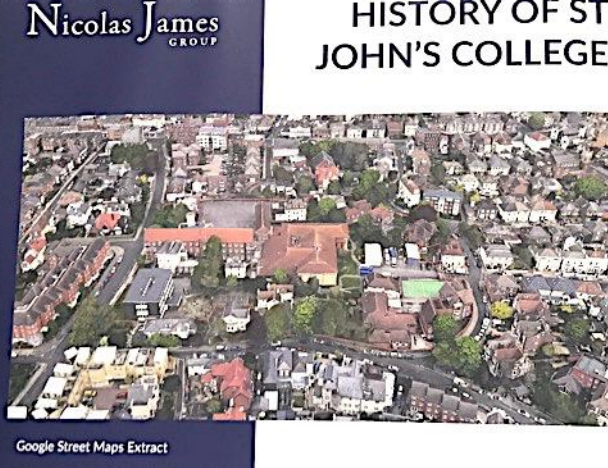
Portsmouth Society's interpretation board







Owen villa



Google Street Maps Extract

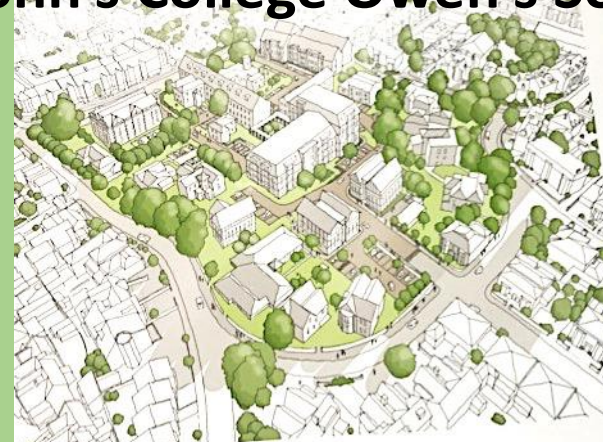


Tower house flats



Music block  
demolish

## St. John's College Owen's Southsea



Classroom block –  
convert to flats



Listed Owen villa  
Interior joinery  
gony



Sports Hall  
Insert floors  
Add new storey



The site is already well-connected and close to bus stops, shops, other facilities and public car parks.

Residents of the site will be encouraged to travel via public transport and on foot. Along with the car parking spaces, we will be providing around 367 cycle spaces, of which 34 will be for visitors.

We are aware of the concerns regarding car parking in Southsea, and as such will be providing a community which is designed to be low in car

usage. For the 217 homes on site, we will be providing 109 car parking spaces – in line with Portsmouth City Council guidance of half a space per home. We will also be providing electric car chargers on site.

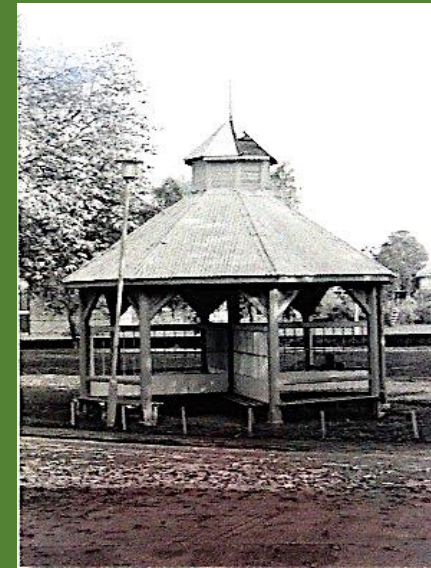
We do not anticipate any overflow parking into neighbouring streets. Residents on site will not be eligible for parking permits under current policy.

A full Transport Plan will be designed and form part of the planning application we submit.





# St. James's Hospital Milton Portsmouth Lunatic Asylum



Chapel



## 1879 Architect George Rake Therapeutic Landscape



## 'Town Green' Public inquiry







Central Post Office Arundel Street

**Demolition? Refurbishment?**



Civic Offices





## Northern Quarter Commercial Road – Due for demolition?





# 2,300 homes plan is agreed



Portsmouth City Council has given the green light for the redevelopment of the north of the city centre, which will introduce 2,300 homes to the area.

The decision was reached in a planning committee meeting, with unanimous approval from council members.

The development, covering areas between Hope Street, Charlotte Street, and Commercial Road to the east, is set to transform the northern part of the city centre. It will include residential units, a new public park and 10,000 sq m of commercial space.

The project is planned to be developed in two phases. The first will involve the construction of two residential blocks, providing 550 homes, and a public park spanning nearly 7,000 sq m. This phase will replace the former Salisbury location, which currently houses the Pitt Street skatepark.

The second phase will see the remaining 1,750 homes and a further 10,000 sq m of commercial space.

quire the demolition of all buildings on the 12.3-hectare site, except for St Agatha's Church.

Nelson ward councillor Lee Hunt, cabinet member for resources, said the project is about "moving Portsmouth forward".

"This is going to be a UK first, the proposal here should evolve into one of the most sustainable districts in the UK and intends to be inclusive, biodiverse and eco-friendly for its community and visitors."

"It's the council's aspiration for sustainable community for the next ten years."

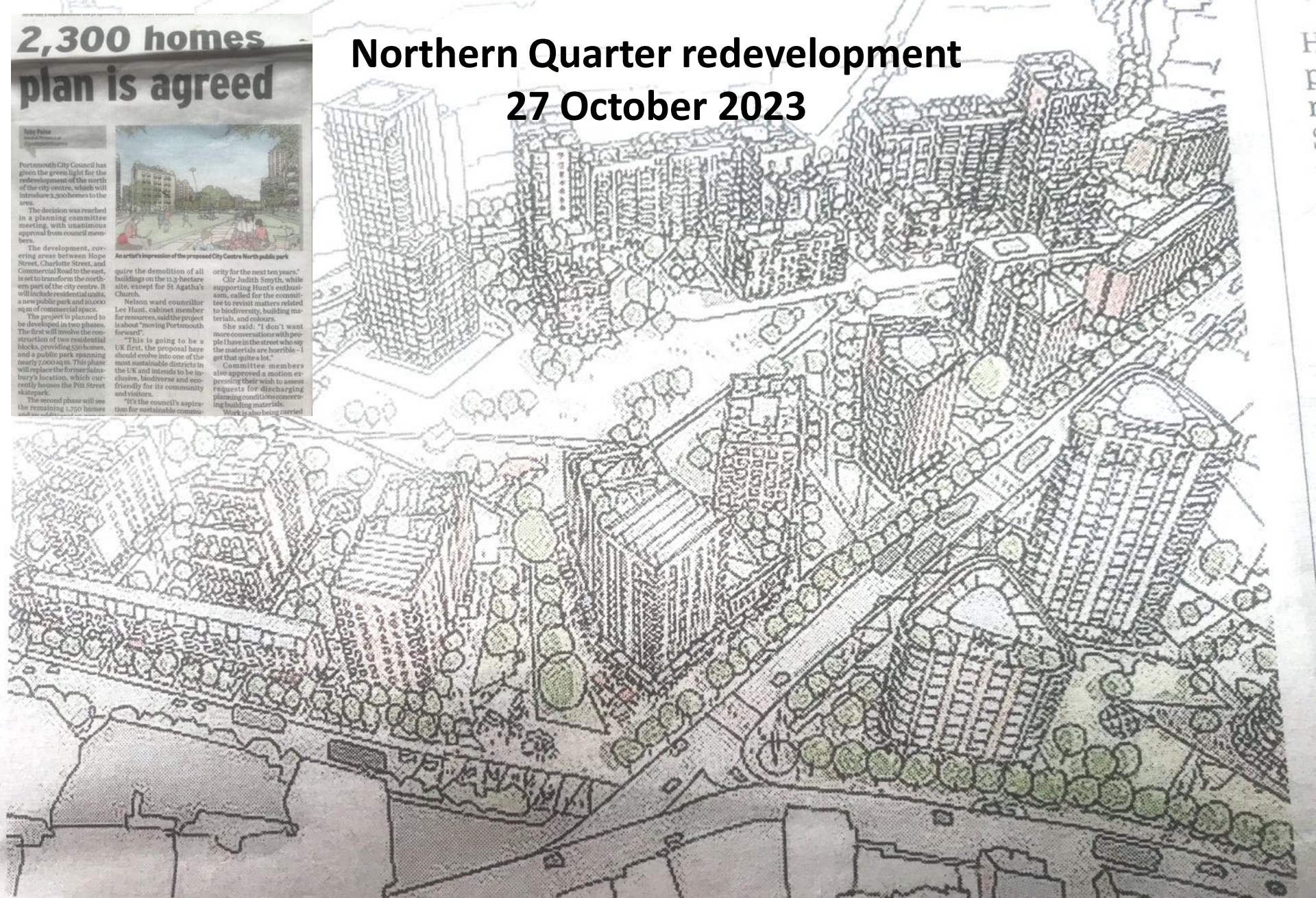
Cllr Judith Smyth, while supporting Hunt's enthusiasm, called for the committee to revisit matters related to biodiversity, building materials, and colours.

She said: "I don't want more conversations with people I have in the street who say the materials are horrible - I get that quite a lot."

Committee members also approved a motion expressing their wish to assess requests for discharging planning conditions concerning building materials.

Work is also being carried

## Northern Quarter redevelopment 27 October 2023



An artist's impression of the proposed City Centre North development

Picture: Portsmouth City Council



Locals using the foreshore



Visit of Tipner Heritage Forum

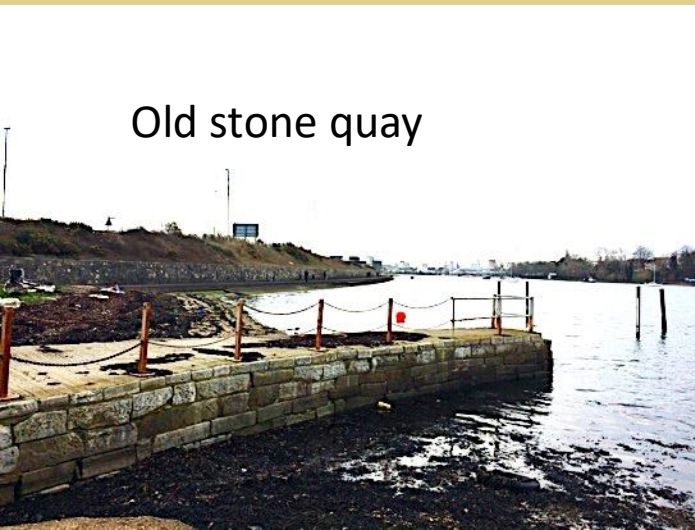


## Tipner West

Firing Range



Old stone quay







Rising city scale – Gunwharf







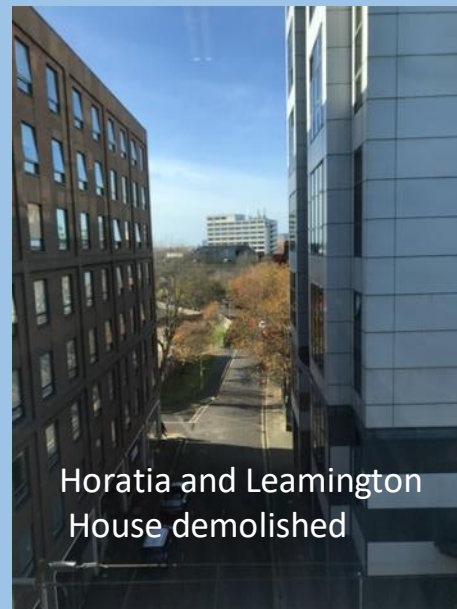
Student housing



'Lipstick' tower Gunwharf



Spinnaker Tower



Horatia and Leamington  
House demolished







Qualitative Landscape Led Approach

Create a multi-delivers both big well-being through  
Establish a more which is active, which acts as a

# “Somers Orchard” New housing and open space Somerstown



Existing



Community Vision



Food growing and fruit trees



Community Garden is great. Gardening helps with mental health and wellbeing.

Suitable place for Scouts / Guides / Cadets for immediate replacement of Gibson Centre

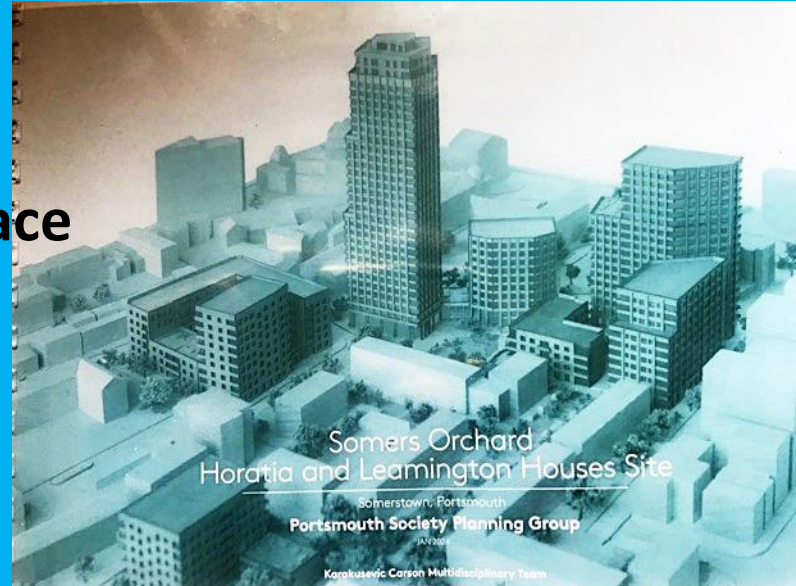
## Community Space



Design Development



Proposal

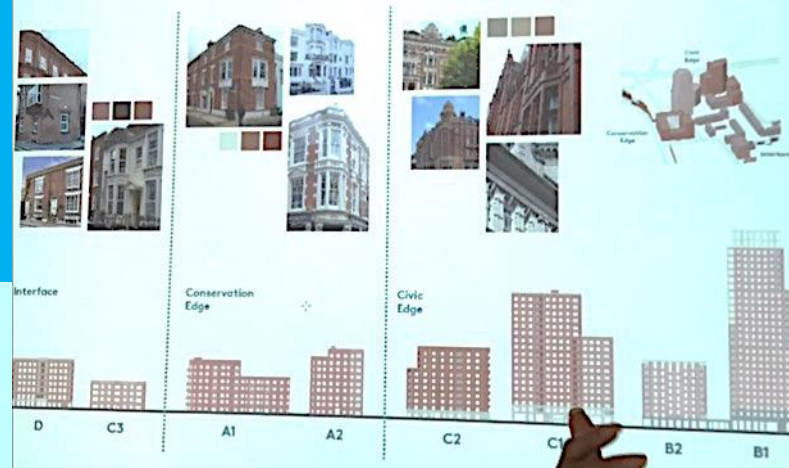


## Somers Orchard Horatia and Leamington Houses Site

Somerstown, Portsmouth  
Portsmouth Society Planning Group  
(2019)

Korakusovic Carson Multidisciplinary Team

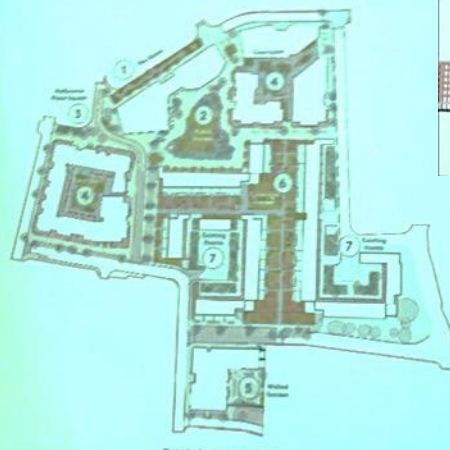
## Elevations



## Public Realm & Landscape



	Best Practice/ Required	Existing	Proposed
Open Space Provision (App 1)	1.01 ha	0.54 ha	1.03 ha
Play Provision	5,352 sqm	-	6,725 sqm
Urban Greening Factor	0.40	0.14	0.59
Tree Canopy Cover	16.5%	6.7%	17.9%
Biodiversity/Habitats	10% gain	4.36	7.54 (73% gain)



- Residential Courtyards  
Courtyards provide ventilation, green space and outdoor play for younger ages.
- Walled Garden  
Provides open space for use by the adjacent housing residents and the community space users.
- Collective Gardens  
The existing space is reimagined as a place where food growing, play and outdoor seating - a green, outdoor space to complement the central green space which is more open and usable in future.
- Existing Block Fronts  
Large and varied building forms, historic green space with additional definition to private spaces.





Replacement for University House



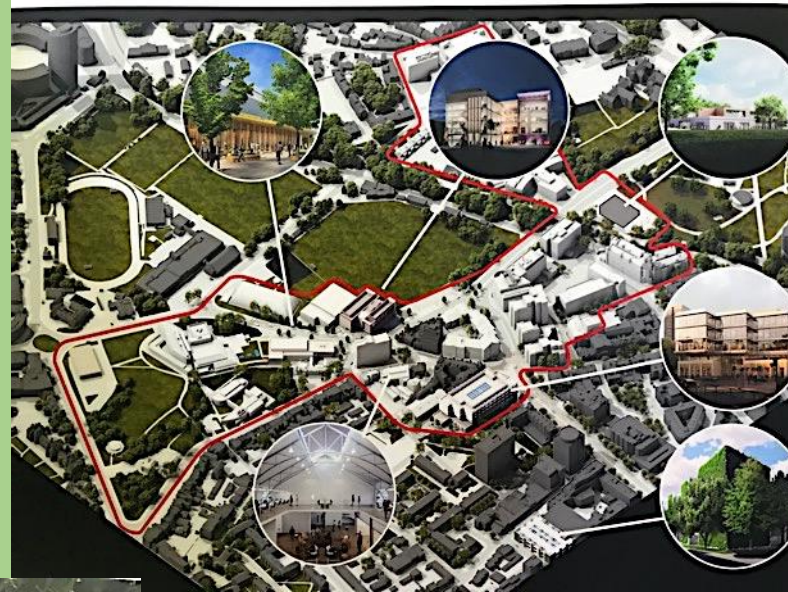
University House

# University of Portsmouth Campus

Development Consultation 20 February 2024



Milton Campus



Law School Victoria Park



Wiltshire Building



Multistorey carpark  
behind Eldon Building





Water companies are making huge profits whilst filling our water with sewage...

**Southern Water is set to increase its Water & Sewerage bills by 10% next year, costing a typical affected home an extra £37/year.**

**For years, Southern Water has pumped raw sewage onto our beautiful beaches and harbours and failed to update its crumbling infrastructure. The neglect of sewage reflects a long-term failure of regulatory oversight by Governments since privatisation.**



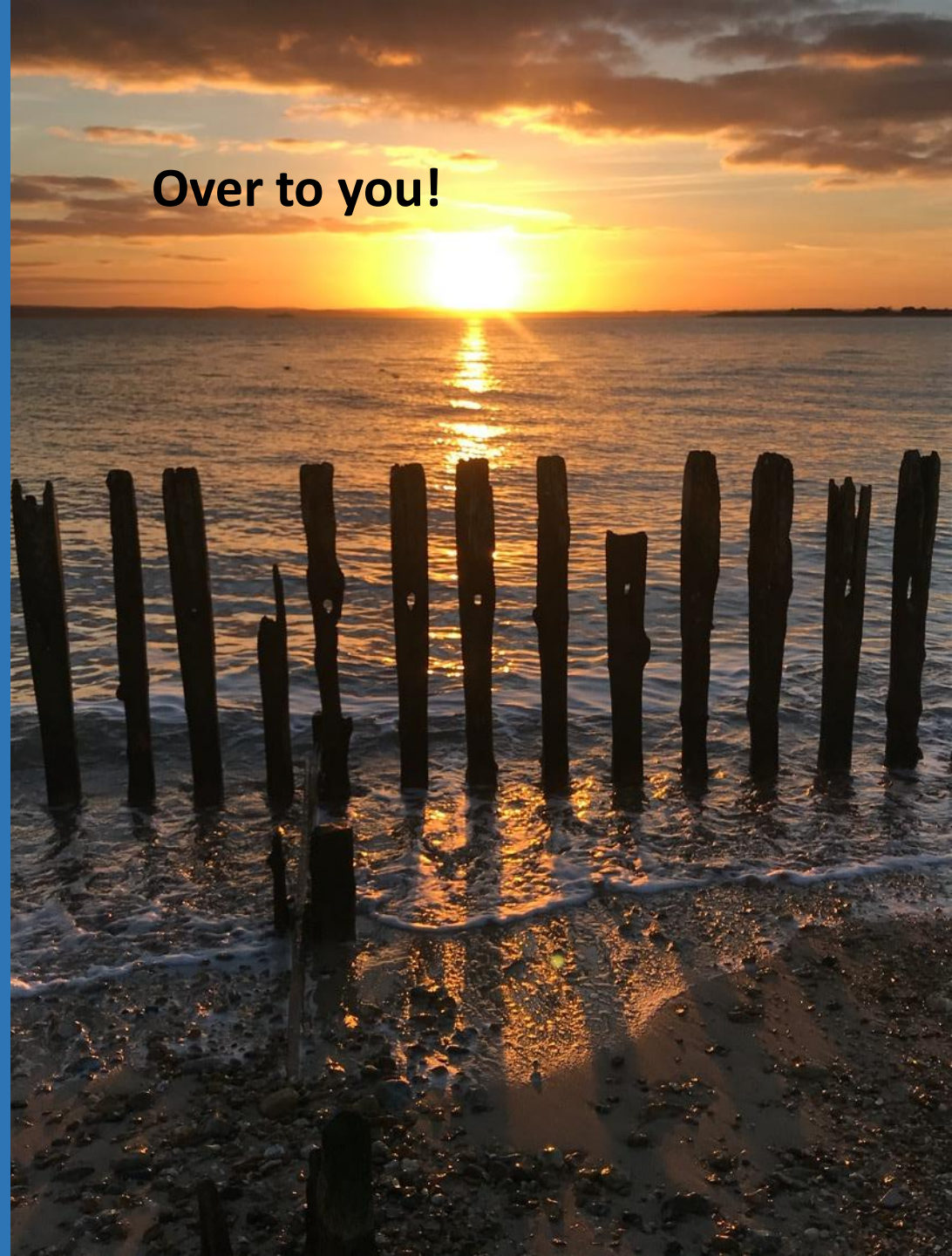


# Key messages

- **Message 1:** Civic Societies should consider asking to join Town Boards and Local Partnership Group so local voices are heard and skills and experience used – **be a route to participation**
- **Message 2:** Heritage needs to be included in Investment Plans to ensure what we already have is cared for as part of our future towns – **investing in heritage works**
- **Message 3:** Town investment plans that include a flexible package of investment that **support a 'whole place' approach** – not just a single big-ticket item – are likely to be successful







**Over to you!**











## Public Art and Culture



**G**ood public art is hard to do. Creating an outdoor gallery that has to battle with the elements of a marine coastal environment is a challenge that can only be answered with an open-minded artist, a budget and some high quality and durable materials; materials that won't fade in the sunlight, be subject to vandalism or wear out after the first storm event. All this and the art itself must be inclusive, engage and be relevant to the place it is situated.

In our opinion, flying in an expensive sculpture from Mian Art Fair, especially when you have a port city fully of talented creatives, should never be part of an agenda. When tasked with creating and harbouring a vision for a series of integrated and standalone public artworks cited within and around the flood defence programme of Southsea and Portsmouth our response was to meet and engage with a diverse and talented range of practicing and emerging artists at different stages of their careers.

